

User's Manual

MOZO.2-AD



Table of Content

➔ Ozone Introduction	1
➔ Features and Specification	1
➔ Structure and Accessories	2
➔ Installation and Usage	3
➔ Application	4
➔ Safety and Cautions	5
➔ FAQ	6
➔ Maintenance Service	6
➔ Warranty card	6

I、 Ozone Introduction

Ozone, O₃, is a molecule that consists of three negatively charged oxygen atoms and is a normal constituent of the earth's atmosphere. Ozone is produced deliberately for a variety of industrial purposes and medical therapy purposes, and is also produced naturally from oxygen whenever ultra-violet radiation or electrical discharges occur, e.g. at high altitudes or by the action of lightning. Ozone itself is a distinctly blue coloured gas (bp – 111.9°C) and is about one and a half times heavier than air (density 2.144g/l). Ozone is used as “ozone air”, a colourless gas produced when ozone is generated from part of the oxygen in air. Ozone cannot be stored or transported in vessels because it falls back into its original form (oxygen) after a while.

Medical ozone has highly pronounced bactericidal, fungicidal and virostatic properties, and is thus widely used in disinfecting infected wounds, as well as in bacterially and virally produced diseases.

II、 Features and Specification

1. Feature

YOUMO AQUAPURE's MINI Ozone Generator with Ozone Destructor MOZ0.2-AD is specially designed for ozone therapy applications. It uses the latest Quartz & Titanium electrode technology which is suited for making pure ozone with oxygen. It delivers wide range for ozone concentrations from 10 upto 104 ug/mL (10~104 gamma) for many different uses. What's more, it has been built in ozone destroyer inside for ozone off gas treatment.

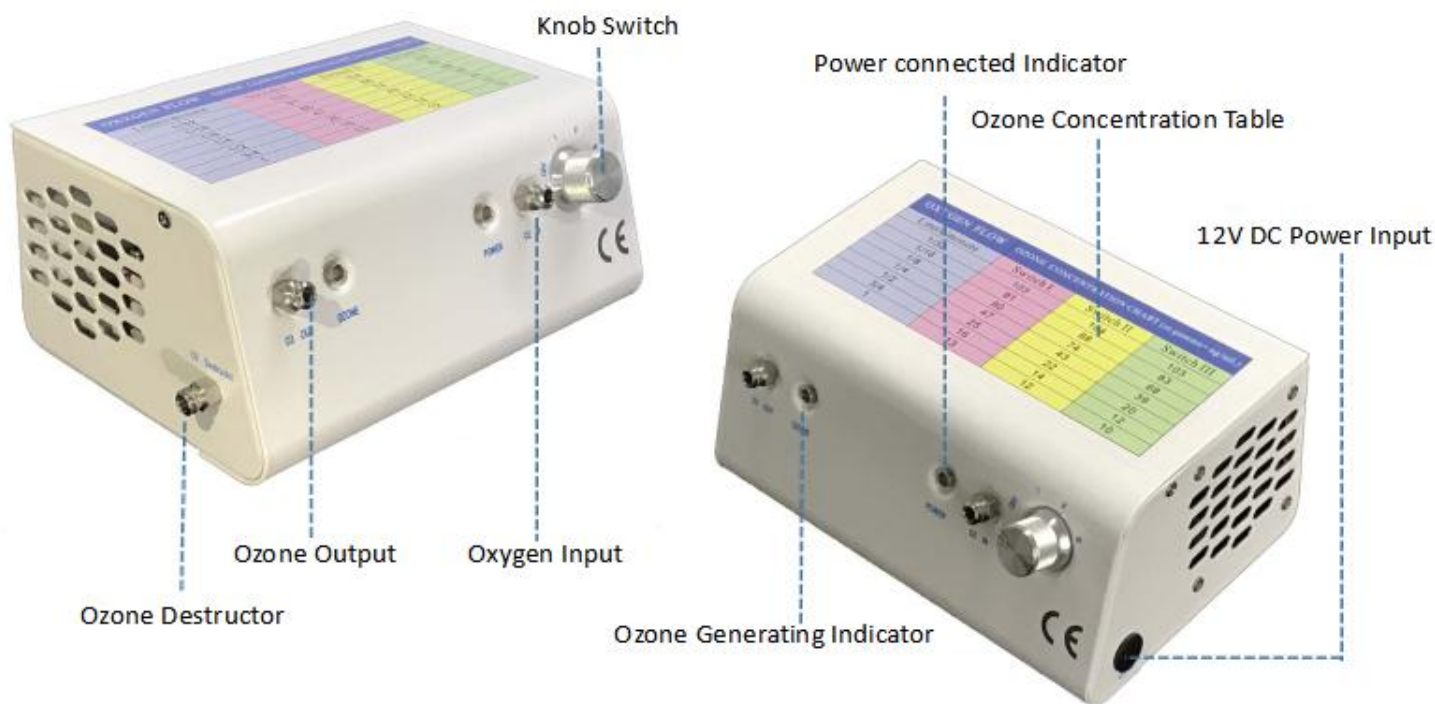
2. Specification

Product Name	MINI Ozone Generator with Ozone Destructor
Model No.	MOZ0.2-AD
Ozone Concentrations:	10 ~ 104 ug/mL (1 ug/mL = 1 gamma = 1 mg/L) See below Ozone Concentration Table.
Connection of Oxygen Inlet & Ozone Outlet & Ozone Destructor Inlet	Standard Luer Lock Connector with SS# 316 material
Cooling System	4000 RPM 60*60*20 cooling fan 15CFM
Ozone Module	Titanium electrode and quartz tube cell, 3 levels of ozone concentrations for each oxygen flow rate
Ozone Technology	Corona Discharge
Life	> 10,000 hours
Input Voltage	12V DC (100-240V AC to 12V DC adaptor)
Rated Power	12W±2.4W
Operating Temperature	-10°C ~ 40°C
Storage Temperature	-20°C ~ 70°C
Product Size(L x W x H)	191*118*82 mm
Package Box Size(L x W x H)	285*155*150 mm
Weight	1.6 kg
Accessories	1pc Adapter (100-240V AC input, 12V DC output); 1pc 3 way connector; 3pcs male luer connectors; 1pc silicon tubing

3. Ozone Concentration Table

OXYGEN FLOW	OZONE CONCENTRATION CHART (in gamma= ug/mL)		
	Switch I	Switch II	Switch III
Liters/minute			
1/32	103	104	103
1/16	91	88	83
1/8	80	74	68
1/4	47	43	39
1/2	25	22	20
3/4	16	14	12
1	13	12	10

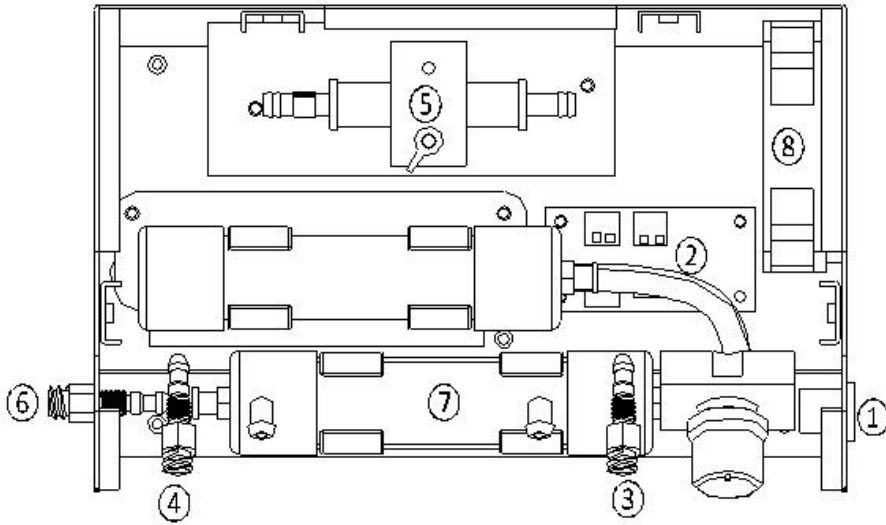
III、 Structure & Accessories



Accessories:



1pc * Power Adaptor / 1pc * 3 way connector / 3pcs * male luer connector / 1.5 meter * silicon tubing



- ① 12V DC power inlet
- ② Power distributor board
- ③ Oxygen source inlet
- ④ Ozone outlet
- ⑤ Ozone generator module
- ⑥ Ozone destructor inlet
- ⑦ Ozone destrctor
- ⑧ Fan

IV、 Installation and Usage

1. Take out the appliance and accessories from the package, put it on a flat ground in which space you are going to run the appliance
2. Connect the oxygen source to the Oxygen Input connector (O2 IN)
3. Connect the 3 way connector to the Ozone Outlet (O3 OUT)
4. Cut a short piece of silicon tubing, add two male luer lock connectors to each end, then connect the side outlet of 3 way connector to the Ozone Destructor (O3 Destructor)
5. Adjust the 3 way connector, make sure the gas flow is from the Ozone Outlet (O3 OUT) to the Ozone Destructor inlet (O3 Destructor) before switch on the appliance.
6. Connect the direct outlet of 3 way connector to the syringe or ozone bags, etc.
7. Plug in the 12V DC power adaptor to the Mains and the appliance. The “POWER” indication light is red when the power is connected successfully.
8. Switch the Knob Switch to the level you need. The “OZONE” indication light is green when the appliance is working.
9. Open the oxygen source, and adjust the oxygen flow rate to get the ozone concentration according to the Ozone Concentration Table.
10. Adjust the 3 way connector, make the gas flow to the syringe or ozone bags, etc.
11. After collecting the ozone, adjust the 3 way connector, make the gas flow back to the Ozone Destructor (O3 Destructor) again.
12. Switch the Knob Switch and turn the appliance off.
13. Close the oxygen source
14. Unplug the appliance.

NOTE: for making ozone drinking water, it does not need the 3 way connector. Just connect the O3 OUTPUT to the ozone glass cup inlet directly, and connect the ozone glass cup outlet to the O3 destructor.

V、 Applications



Ozone for Rectal Insufflation



Ozone for Vaginal Treatment



Ozone Drinking Water



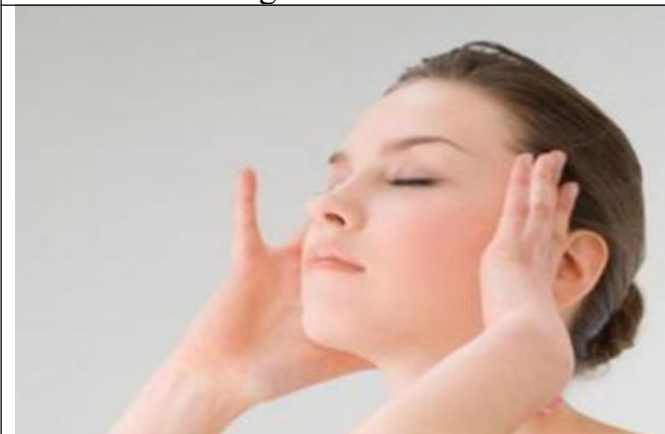
Ozone for Leaky Gut Treatment



Ozone for making Ozone Oil



Ozone for Wound Healing



Ozone for Ear Insufflation



Ozone for Nasal & Sinus Insufflation



Ozone for dental



Ozone Sauna



Ozone for Lyme disease treatment



Ozone for Cancer treatment

VI、 Safety and Cautions

1. Make sure that all accessories are attached in the box and the appliance is in good condition when it is received. Always keep the appliance vertical on the flat ground.
2. Do not store the appliance in a humid place.
3. Do not clean this appliance using a damp cloth when it is working
4. Operate the appliance in a precondition within 0°C~ 40°C& 0 ~ 70% RH
5. Do dis-connect the adapter before opening the product or any maintenance.
6. It is not recommended to switch on & off frequently on this appliance. To avoid any defective, please re-switch on the appliance at least 2mins after switching off.
7. Do not block the ventilated fan and outlet of the appliance all the time.
8. Turn off this appliance and unplug the adapter immediately when there is ozone leakage inside the housing. A space with ventilation is preferable to stay when this happens.
9. It is not preferable to operate the appliance in flammable or explosive places. Do be more careful if it is necessary.
10. Do not allow water go into the appliance.
11. Pack the appliance into a box if it is not going to use for a long while

VII、 FAQ

Queries	Answers
Power indication light doesn't work after plugging the adapter to the mains power socket	<ul style="list-style-type: none"> a. if the adapter is well connected to the appliance or not b. if the indication light of the adapter on or off c. if the adapter is in good condition or not d. unplug the adapter and open the appliance, check if the wire of power connector is in good condition or not e. ask for help from whom is responsible for
No ozone comes out when the appliance is on, and the power and ozone indication light is on as well	<ul style="list-style-type: none"> a. if the air source has been connected and be offered to make ozone b. the fan is working or not c. unplug the adapter and open the appliance, check if the connection inside is in good condition or not d. if the quartz tube of the ozone generator module is broken or not e. change the ozone generator module or ask for help from whom is
The ozone smell is very strong around the appliance	<ul style="list-style-type: none"> a. If the ozone outlet connectors are connected well b. If the ozone destructor be connected properly c. If the ozone destructor need replacements
Who is allowed to operate the appliance	People who are trained or with relative knowledge of ozone appliance is allowed to operate or repair it

VIII、 Maintenance Service

1. This MINI Ozone Generator is warranted to be free from all defects in material in normal ozone therapy use for a period of (1) year from date of purchase.
2. The warranty is guaranteed only to the original purchaser and members of his or her immediate household. The warranty is subject to the following provisions. Any damages or malfunctions caused by negligence, abuse, or not operate in accordance with the User's Manual are not covered by this warranty. Also, any defects or damages caused by unauthorized service or the use of other than Genuine parts are not covered.
3. YOUMO AQUAPURE will, at its option, repair or replace a defective ozone generator or part(s) for the unit that is covered by this warranty. As a matter of warranty policy, YOUMO AQUAPURE will not refund the customer's purchasing price. Please recorder the following Warranty Card when you purchase the unit from our company or the distributor.
4. To obtain warranty service you must return the defective ozone generator or its parts along with proof of purchasing to our company or any Authorized Warranty Station. All transportation charges on parts, or units, submitted under this Warranty shall be borne by purchaser.

IX、 Warrenty card

Customer Name		Model No.	
Purchase Date		Serial No.	
Customer Address			
Customer Phone			